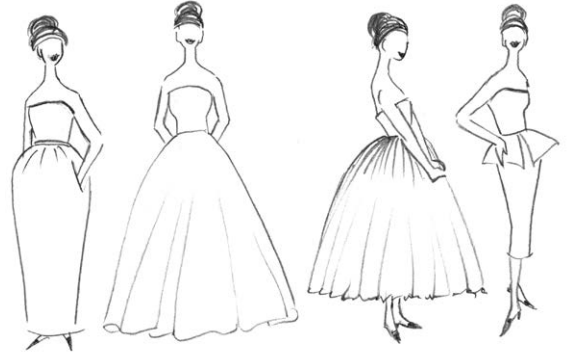


# GLOSSARY



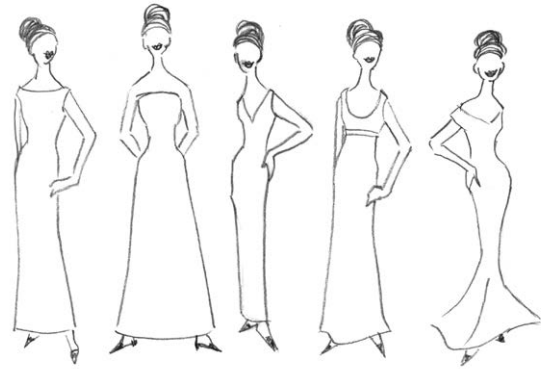
Bias cut, box pleated (also floor length), hi/low hem with train, cap sleeve (also ankle length)



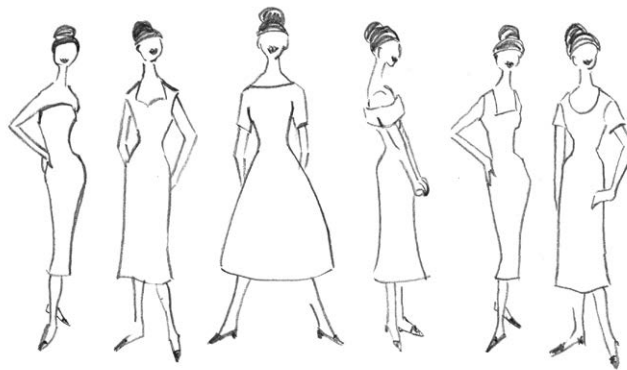
Tulip, full, gathered (also ballerina length), peplum (also knee length)



Long sleeve (also flared sleeve and mini length), elbow length sleeve (also sheer sleeve, fitted sleeve), bell sleeve, puff sleeve, split-front sleeve



Straight, A-line, pencil, empire line, fish tail



Strapless, sweetheart, boat, off-the-shoulder, square, scoop neck

JULIE GOODWIN

COUTURE